

# Advertising Proposal

## AUTOMOBILE BARCELONA



Advertising Services Agency

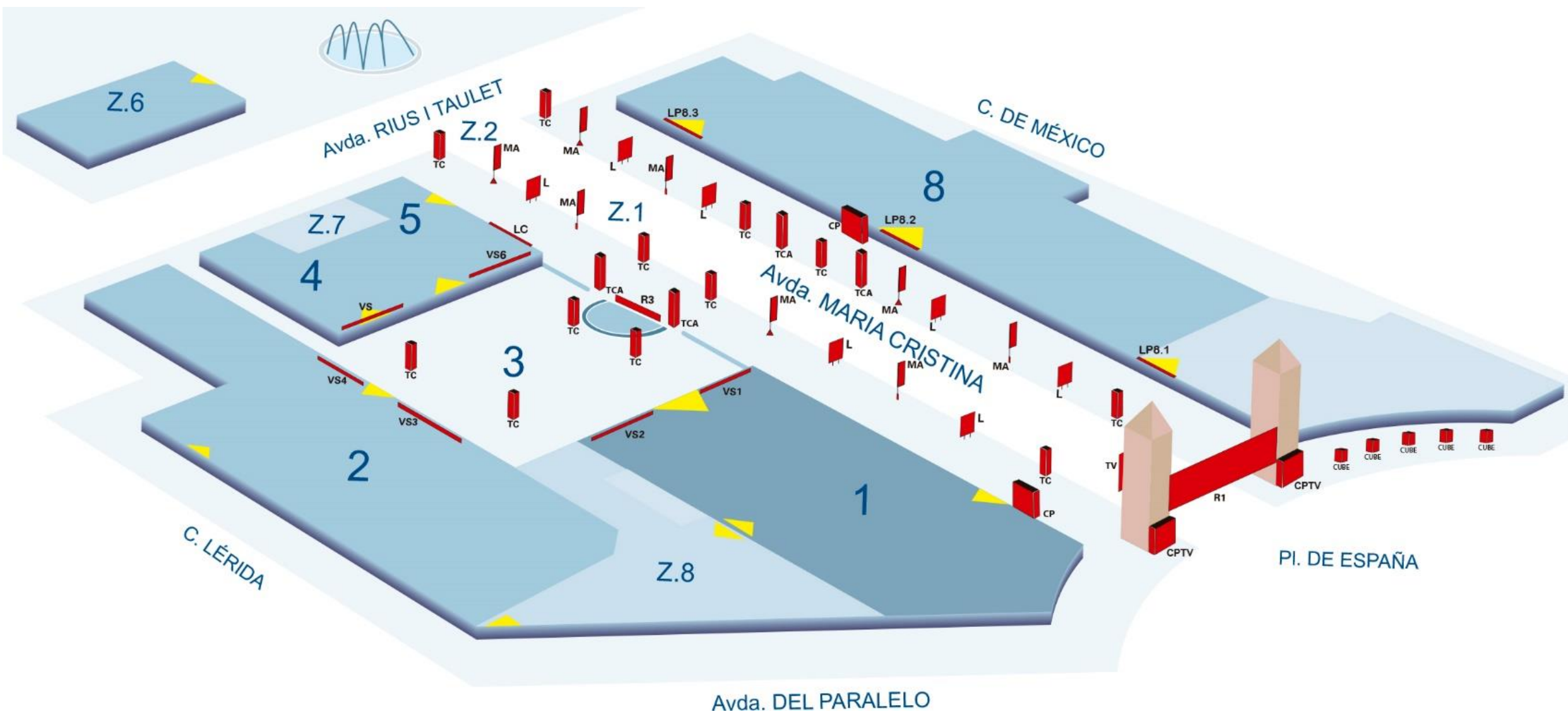
Quick and Agile.

Dynamic and Expert.

[www.edigesa.com](http://www.edigesa.com)

T.- (+34) 933 227 417

[automobile@edigesa.com](mailto:automobile@edigesa.com)





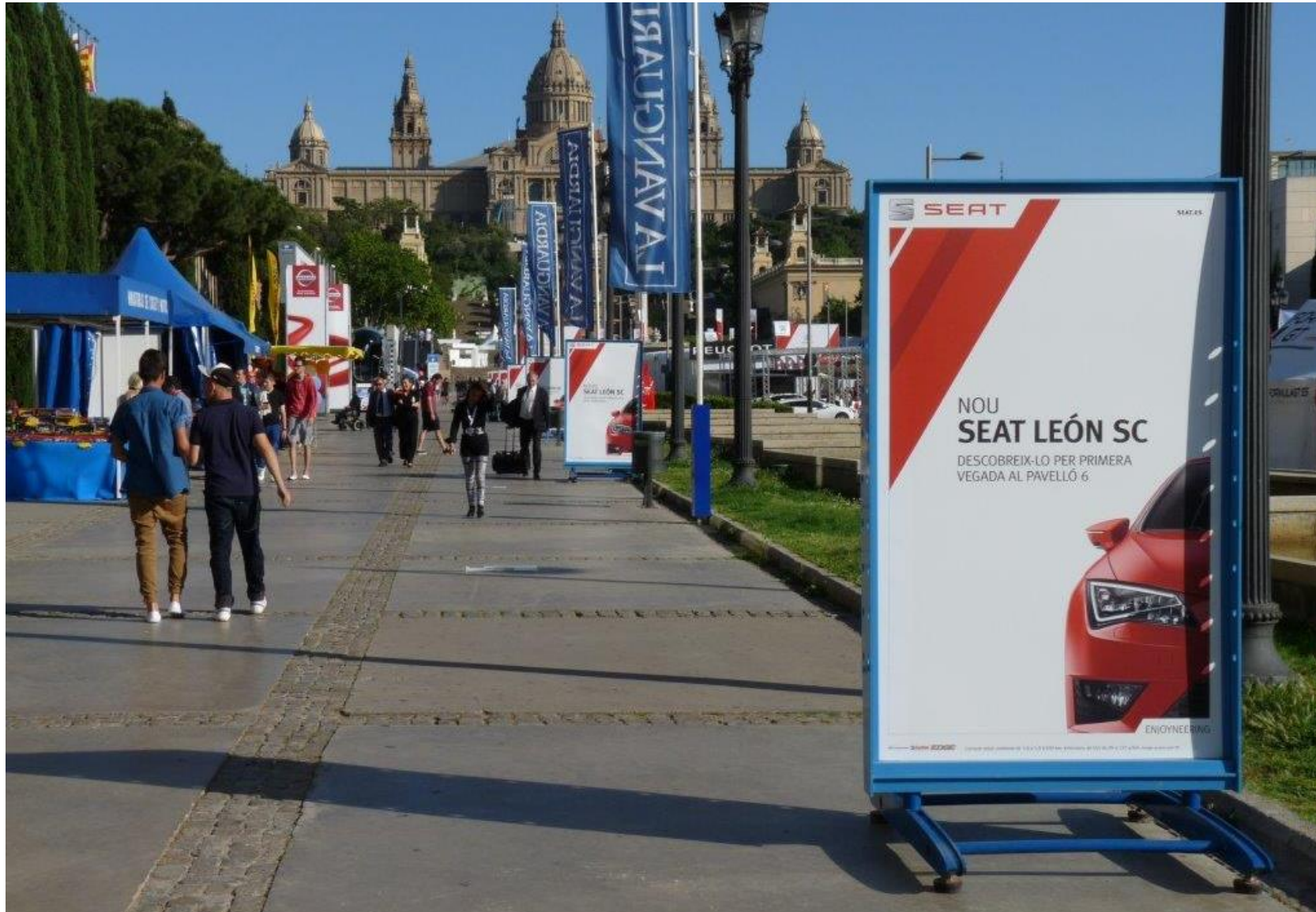
CPTV – Free standing (8 x 6 x 1,50 m.)



TV – Banner on Torres Venecianas (6 x 14 m.)



CUBE – 4 sided tower 1,20 x 2,04 m.



L – Outdoor ground board 1,20 x 2 m. -two sides-

# Ave. M<sup>a</sup> Cristina



MA – Flagpole 7 m. with flag 1 x 4 m.



TC – 4 sided tower 1,15 x 4 m.



TCA – 4 sided tower 1,50 x 6 m.



CP6 – free standing 6,50 x 5 x 1,50 m.



CP8 – free standing 8 x 5 x 1,50 m.



LC – Banner on palacio de congresos 70 x 7,50 m.



LC – Banner on palacio de congresos 15 x 7,50 m.



LP8.1 – Banner above main entrance Hall 8, next to plaza España (21,70 x 7,60 m.)



LP8.2 – Banner above main entrance Hall 8, central (22,50 x 7,50 m.)



LP8.3 – Banner above main entrance Hall 8, next to Rius i Taulet (24,80 x 5 m.)



2 TCA – 4 sided tower 1,5 x 6 m.

R3 – Billboard entrance to plaza Universo de 12,80 x 2,50 m. \*Signage



2 TCA – 4 sided tower 1,5 x 6 m.

R3 – Billboard exit from plaza Universo 12,80 x 2,50 m. 1 side



VS2 – Billboard Plz. Universo - Frontis Hall1B (52 x 6,50 m.)



VS3 – Billboard Plz. Universo - Frontis Hall2A (36,40 x 6,50 m.)

VS4 – Billboard Plz. Universo - Frontis Hall2B (36,40 x 6,50 m.)



VS5 – Billboard Plz. Universo - Frontis Hall4 (62,40 x 6,50 m.)